

Fluid control valve(2/2way)

2W Series (Internally piloted and normally closed)



Ordering code

Ordering code of valves

2W 150 15 A □ T

① ② ③ ④ ⑤ ⑥

① Model	② Orifice size	③ Port size	④ Voltage	⑤ Electrical entry	⑥ Thread type
2W: 2/2 way internally piloted and normally closed	150: Φ15mm	15: 1/2"	A: AC220V B: DC24V	Blank: Terminal I: Flying leads [Note]	T: NPT
	200: Φ20mm	20: 3/4"	C: AC110V E: AC24V		
	250: Φ25mm	25: 1"	F: DC12V		

[Note]: The wire length is 0.5m.

Ordering code of accessories

Ordering code of accessories is the same as 2S series valve's, Please refer to P208 for details of ordering code.

[Note] 320\400\500 series valves do not have mounting accessories.

Specification

Model\Item	Port size [Note1]	Orifice size (Φmm)	Cv	Valid area or section (mm ²)	Weight [Note2](g)	Operating pressure differential		Proof pressure	
						MPa	psi	MPa	psi
2W150-15	1/2"	15.0	5.50	100.0	720	Max: 1.0 Min: 0.05	Max: 150 Min: 10	1.5	220
2W200-20	3/4"	20.0	9.50	170.0	950				
2W250-25	1"	25.0	12.50	220.0	1200				

[Note1] NPT thread is available.

[Note2] The weight in the table is the terminal valve's weight, Flying leads valve's weight is 10g less than terminal's.

Specification of coil

Valve type	Coil type	Power type	Frequency (Hz)	Voltage range	Electrical entry	Power Consumption (VA/W)	Insulation	Temp. rise(°C)
2W150 2W200 2W250	CDA116 CLA116	AC	50	±15%	Terminal (CDA) Flying leads (CLA)	10.0VA	Class B	35
			60			8.0VA		30
		DC	-	±10%		6.5W		30

Product feature

1. Indirect acting(Internal pilot) and normally closed type 2/2 way solenoid valve. Its can change direction quickly and has large flow.
2. It is compact, small and light weight. It is easy to install and dismantle;
3. The valve body is made of brass . The coil has a Heat resistance classification of Class B. The standard seal material is FPM-F. Please contact us if other material are required.
4. The protection class of the coil is IP65 and there is a choice for Flying leads or terminal electrical entry .

Fluid control valve(2/2way)

2W Series (Internally piloted and normally closed)

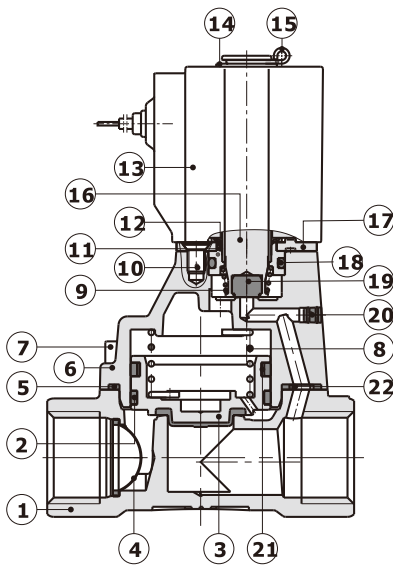
Valve's specification

Acting		Internally piloted				
Initial state		Normally closed				
Adaptable fluid		Air, Water, Oil				
Viscosity limit		Under 20CST				
Ambient and fluid temperature(°C)		Water	Air	Oil	Ambient	
	Max.	80	90	80	70	
	Min.	1	-20 [Note1]	-10 [Note2]	-20	

[Note1] Dew point: -20(°C) or less ; [Note2] 50CST or less.

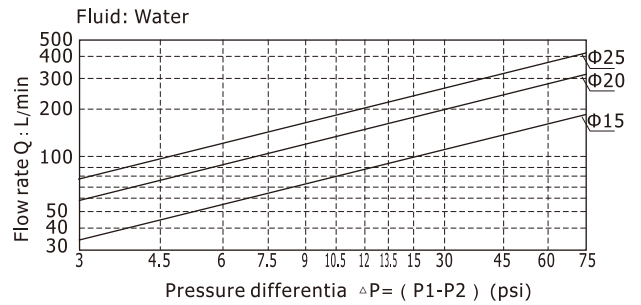
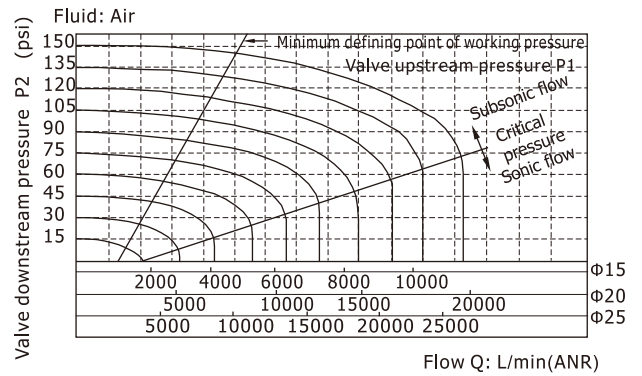
Inner structure

2W150 (Flying leads)



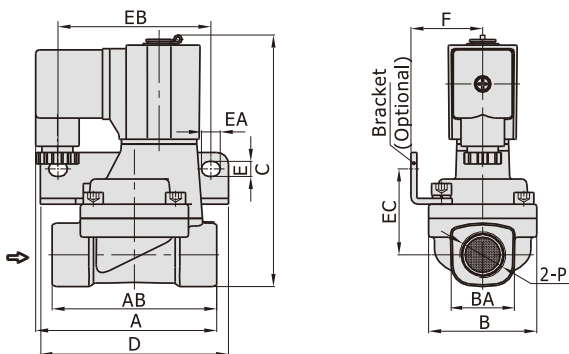
No.	Item
1	Body
2	Filter
3	Piston
4	Wear ring
5	O-ring
6	Cover
7	Screw
8	Spring
9	Spring
10	Screw
11	Fixed cap
12	Washer
13	Coil assembly
14	Washer
15	E Clip
16	Movable core
17	Fixed plate
18	O-ring
19	Airtight ring
20	Plug
21	Spring
22	Spacer

Flow chart



Dimensions

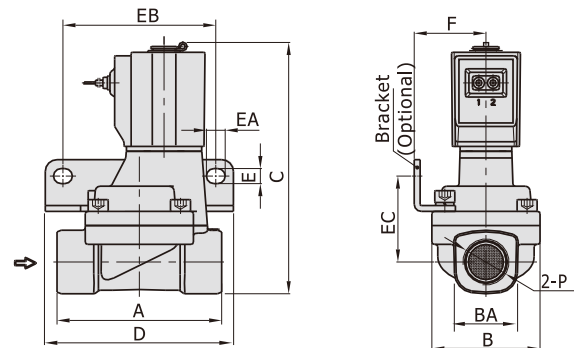
2W150~250 (Terminal)



Model\Item	A	AB	B	BA	C	D	E	EA	EB	EC	F	P
2W150-15	77	70	46	27.5	107	80	6.4	8	65	36.5	30.5	1/2"
2W200-20	78.5	82	53	33.5	115.5	90	6.4	8	75	40	34	3/4"
2W250-25	81	92	59	40.5	124	95	6.4	8	80	44.5	36	1"

2W150~250(Flying leads)

[Unit: mm]



Model\Item	A	B	BA	C	D	E	EA	EB	EC	F	P
2W150-15	70	46	27.5	107	80	6.4	8	65	36.5	30.5	1/2"
2W200-20	82	53	33.5	115.5	90	6.4	8	75	40	34	3/4"
2W250-25	92	59	40.5	124	95	6.4	8	80	44.5	36	1"